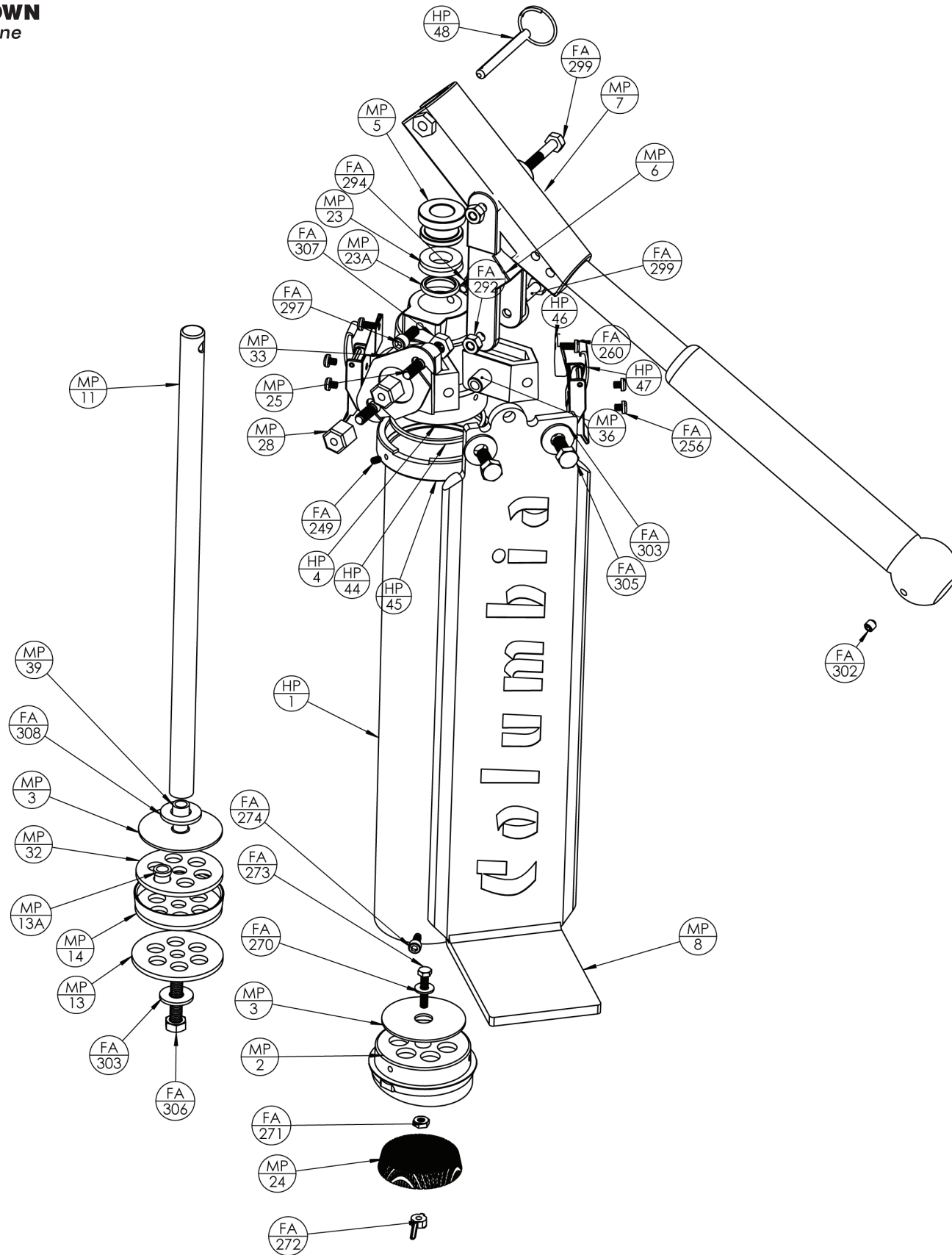


PART #	QUANTITY REQUIRED	MUD PUMP (MMP)
MP #1	1	Pump Cylinder
MP #2	1	Foot Valve Casting
MP #3	2	Pump Flapper Valve
MP #4	1	Head Casting (see sub-assembly)
MP #5	1	Head Bushing
MP #6	1	Handle Link
MP #7	1	Handle
MP #8	1	Leg
MP #9	1	Standard Fitting
MP #9A	1	Connecting Chain
MP #9C	2	"S" Hook
MP #11	1	Piston Shaft
MP #13	1	Piston Backing Washer (large)
MP #13A	1	Piston Backing Washer (small) incl MP#32
MP #14	1	Piston Cup
MP #23	1	Mud Pump Seal
MP #23A	3	"O" Ring
MP #24	1	Mud Pump Screen
MP #25	2	Filler Stud
MP #27	1	Gooseneck (see tool list)
MP #27C	1	Gooseneck O-Ring Retainer
MP #27D	1	Gooseneck Bushing
MP #27E	2	Gooseneck Rubber Guard
MP #28	2	Filler Nut
MP #32	1	Backing Washer Locator

PART #	QUANTITY REQUIRED	MUD PUMP (MMP)
MP #33	1	Filler Gasket
MP #34	1	Adaptor (see sub-assembly or tool list)
MP #36	1	Nylatron Bushing
MP #39	1	Sleeve
FA #235	3	6-32 x 1/8" Set Screw (on old style gooseneck)
FA #270	1	#10 x 3/4" Fender Washer
FA #271	1	10-24 Nyloc Nut
FA #272	1	10-24 Wing Nut
FA #273	1	10-24 x 1" Hex Bolt
FA #274	6	10-24 x 3/8" Socket
FA #286	1	1/4" x 1/2" Flat Washer
FA #290	3	1/4-20 Nyloc Nut (use 2 for Hot Pump)
FA #294	1	1/4-20 x 3/8" Socket
FA #297	1	1/4-20 x 5/8" Socket
FA #300	1	1/4-20 x 2" Hex Bolt
FA #301	2	1/4-20 x 2 1/4" Hex Bolt
FA #302	1	1/4-28 x 1/4" Set Screw
FA #303	5	5/16 Flat Washer
FA #305	2	5/16-18 x 3/4" Hex Bolt
FA #306	1	5/16-18 x 1 1/4" Hex Bolt
FA #307	2	5/16 x 24 Jam Nut
FA #308	1	1/2" x 7/8" Flat Washer
FA #313	1	1/4-20 x 1/4" Socket Head Set Screw
MPA-4	1	HEAD CASTING ASSEMBLY
MP #4	1	Head Casting
MP#25	2	Filler Studs
MP#36	1	Nylatron Bushing
MPA-34	1	ADAPTOR ASSEMBLY
MP#9	1	Standard Fitting
MP#9A	1	Connecting Chain
MP#9C	2	"S" Hook
MP#23A	1	"O" Ring
MP#33	1	Filler Gasket
MP#34	1	Adaptor



PART #	QUANTITY REQUIRED	MUD PUMP (MMP)
MP # 1	1	Pump Cylinder
MP # 2	1	Foot Valve Casting
MP # 3	2	Pump Flapper Valve
MP # 4	1	Head Casting (see sub-assembly)
MP # 5	1	Head Bushing
MP # 6	1	Handle Link
MP # 7	1	Handle
MP # 8	1	Leg
MP # 9	1	Standard Fitting
MP #9A	1	Connecting Chain
MP #9C	2	"S" Hook
MP #11	1	Piston Shaft
MP #13	1	Piston Backing Washer (large)
MP #13A	1	Piston Backing Washer (small) incl MP#32
MP #14	1	Piston Cup
MP #23	1	Mud Pump Seal
MP #23A	3	"O" Ring
MP #24	1	Mud Pump Screen
MP #25	2	Filler Stud
MP #28	2	Filler Nut
MP #32	1	Backing Washer Locator
MP #33	1	Filler Gasket
MP #34	1	Adaptor (see sub-assembly or tool list)
MP #36	1	Nylatron Bushing
MP #39	1	Sleeve
FA # 270	1	#10 x 3/4" Fender Washer
FA # 271	1	10-24 Nyloc Nut
FA # 272	1	10-24 Wing Nut
FA # 273	1	10-24 x 1" Hex Bolt
FA # 274	6	10-24 x 3/8" Socket
FA # 286	1	1/4" x 1/2" Flat Washer
FA # 290	3	1/4-20 Nyloc Nut (use 2 for Hot Pump)
FA # 294	1	1/4-20 x 3/8" Socket
FA # 297	1	1/4-20 x 5/8" Socket
FA # 300	1	1/4-20 x 2" Hex Bolt
FA # 301	2	1/4-20 x 2 1/4" Hex Bolt
FA # 302	1	1/4-28 x 1/4" Set Screw
FA # 303	5	5/16 Flat Washer
FA # 305	2	5/16-18 x 3/4" Hex Bolt
FA # 306	1	5/16-18 x 1 1/4" Hex Bolt
FA # 307	2	5/16 x 24 Jam Nut
FA # 308	1	1/2" x 7/8" Flat Washer
FA # 313	1	1/4-20 x 1/4" Socket Head Set Screw
MPA-4	1	HEAD CASTING ASSEMBLY
MP #4	1	Head Casting
MP #25	2	Filler Studs
MP #36	1	Nylatron Bushing

PARTS LISTED ARE EXCLUSIVE TO HOT PUMPS, FOR ALL OTHER HOT PUMP PARTS SEE MUD PUMP PARTS LIST.

PART #	QUANTITY REQUIRED	QUICK CLEAN MUD PUMP (MHMP)
HP #1	1	Pump Cylinder
HP #4	1	Head Casting (see sub-assembly)
HP#44	1	Collar "O" Ring
HP#45	1	"O" Ring Enclosure
HP#46	2	Latch Keeper
HP#47	2	Latch Clamp Assembly
HP#48	1	Handle Pin
FA #249	3	8-32 x 3/16" Set Screw
FA #256	4	8-32 x 3/16" Binder Slot
FA #260	2	8-32 x 3/8" Pan Slot
HPA-4	1	HEAD CASTING ASSEMBLY
HP #4	1	Head Casting
MP#25	2	Filler Studs
MP#36	1	Nylatron Bushings
HP#44	1	Collar "O" Ring